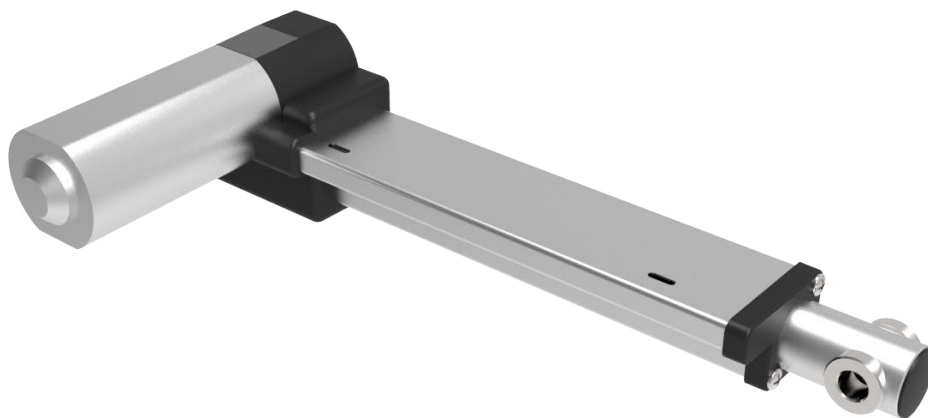


ACTUATOR MI-14 telescopic stem

Code MOAC14000



DESIGN IN MOVIMENTO



2YEARS

Warranty

Benefit

Thanks to its reduced dimensions, the MI-14 telescopic stem actuator is suitable for applications where the available space is particularly small, such as compact

headrests and backrests. The adjustable microswitches may compensate any small differences in the frames or mechanisms.

Technical features






Max stroke: 400 mm

Max load: 4500 N

Rear attachment: 0° - 45° - 90° - 135°

Supply cable length: 500mm - 1000mm

Configuration (max load - speed no load)

				
4500N - 6mm/sec	2500N - 12mm/sec	1500N - 18mm/sec	1000N - 24mm/sec	800N - 38mm/sec

Motionitalia Design and quality Made in Italy

Headquarters: via Navicella 26, 47122 Forlì (FC) Tel. +39 0543 774768 Fax. +39 0543 798409 www.motionitalia.com info@motionitalia.com

The producer reserves the right to modify, at any moment and without notice, the technical specification of its products